

# CLOSED CIRCUIT TELEVISION – CCTV

**Perimeter Protection of Premises Using Laser and Thermal Imaging Detection Using the System of Intelligent Video Analysis.**

VÍTKOVICE IT SOLUTIONS a.s. Company in cooperation with renowned partners offers a unique set of products and solutions for the CCTV security. Our specialists are able to create simple or complex and extensive systems that accurately reflect current as well as future needs of each client. Our main objective in this area is customer satisfaction. For this reason, we are interested in the latest technology while expanding the education of our specialists.

## What does CCTV mean?

CCTV - closed circuit camera system is a closed circuit television, which is designed to monitor designated areas, displaying images on monitors in real time and archiving of recorded videos. This system consists of cameras, software and hardware equipment such as recorders, servers, monitors, hard drives, microphones (speakers), etc. In addition to the traditional use in the chemical industry, urban centers, entrances to buildings or roadways, our company has a system recognition of human faces, registration numbers or even the superstructure functions that can identify atypical elements in the form of noise or movement of the object itself. All of these capabilities that we can provide in connection with CCTV, move the area of security and monitoring to a higher and thus more professional level.

## VÍTKOVICE IT SOLUTIONS a.s.

<http://itsolutions.vitkovice.cz> ■ email: [ITSolutions@vitkovice.com](mailto:ITSolutions@vitkovice.com) ■ tel.: +420 596 663 111 ■ GSM: +420 606 026 257

Cihelná 14  
702 00 Ostrava  
Czech Republic

Výstavní 97b  
706 02 Ostrava  
Czech Republic

Ruská 60  
706 02 Ostrava  
Czech Republic

Cejl 62  
602 00 Brno  
Czech Republic

Weilova 2e  
102 00 Praha 10  
Czech Republic

Václavské náměstí 2  
110 00 Praha 1  
Czech Republic

## IN CONNECTION WITH CCTV SYSTEM WE OFFER

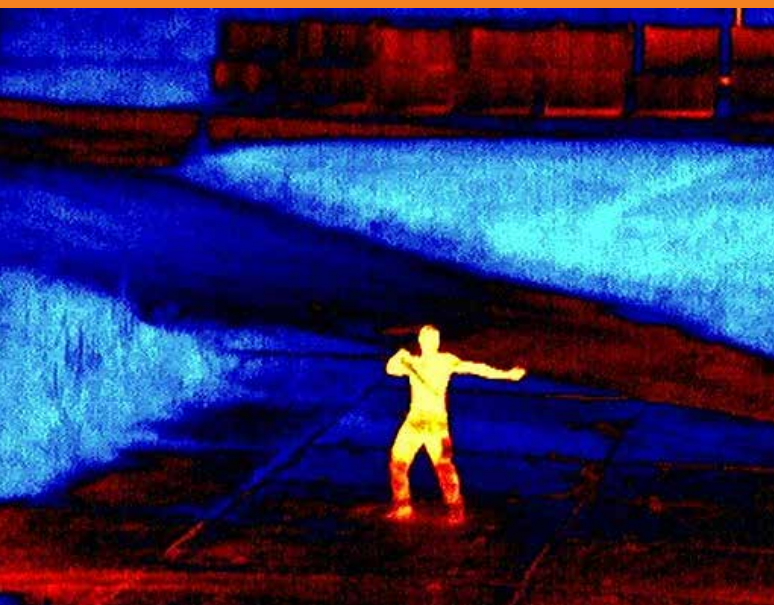
- top-class hardware equipment (thermal imagers, laser cameras, cameras with very high resolution (4K))
- the latest software products (Ateas, Genetec Omnicast, Milestone secuFACE),
- expanding and upgrading existing CCTV systems
- professional configuration and commissioning
- integration with other security systems (ACS, EZP, EPS)
- intelligent video analysis
- access to the system from any workstations and mobile devices
- Authorized preparation of project documentation
- checks, inspections and maintenance of the equipment

We carry out all the work in accordance with respect for the legislative framework and code of standards.

## REFERENCES

- Security and CCTV system in the industrial complex of Vítkovice a.s., 2012
- Video analytic guarding of artistic works in the Russian street - Ostrava, 2013
- The CCTV in Milan Dobeš Museum in Bratislava, 2014
- Expansion of the existing CCTV system at the airport Vaclav Havel in Prague,
- Thermal imaging camera system for marshalling area for trains in the Lower Vítkovice, 2015

1828



### VÍTKOVICE IT SOLUTIONS a.s.

<http://itsolutions.vitkovice.cz> ■ email: [ITSolutions@vitkovice.com](mailto:ITSolutions@vitkovice.com) ■ tel.: +420 596 663 111 ■ GSM: +420 606 026 257

Cihelní 14  
702 00 Ostrava  
Czech Republic

Výstavní 97b  
706 02 Ostrava  
Czech Republic

Ruská 60  
706 02 Ostrava  
Czech Republic

Cejl 62  
602 00 Brno  
Czech Republic

Weilova 2e  
102 00 Praha 10  
Czech Republic

Václavské náměstí 2  
110 00 Praha 1  
Czech Republic